

More ways to learn about
Shandong FUJIZY elevator



Official Tiktok
number



Official wechat
public account



360° Company
panorama

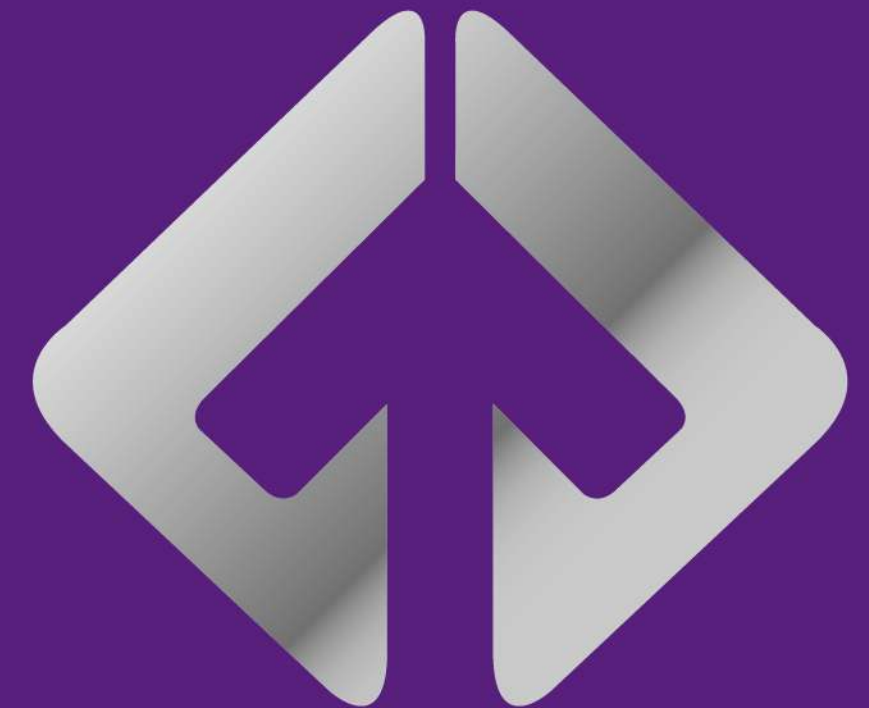


Escalator 3D
animation



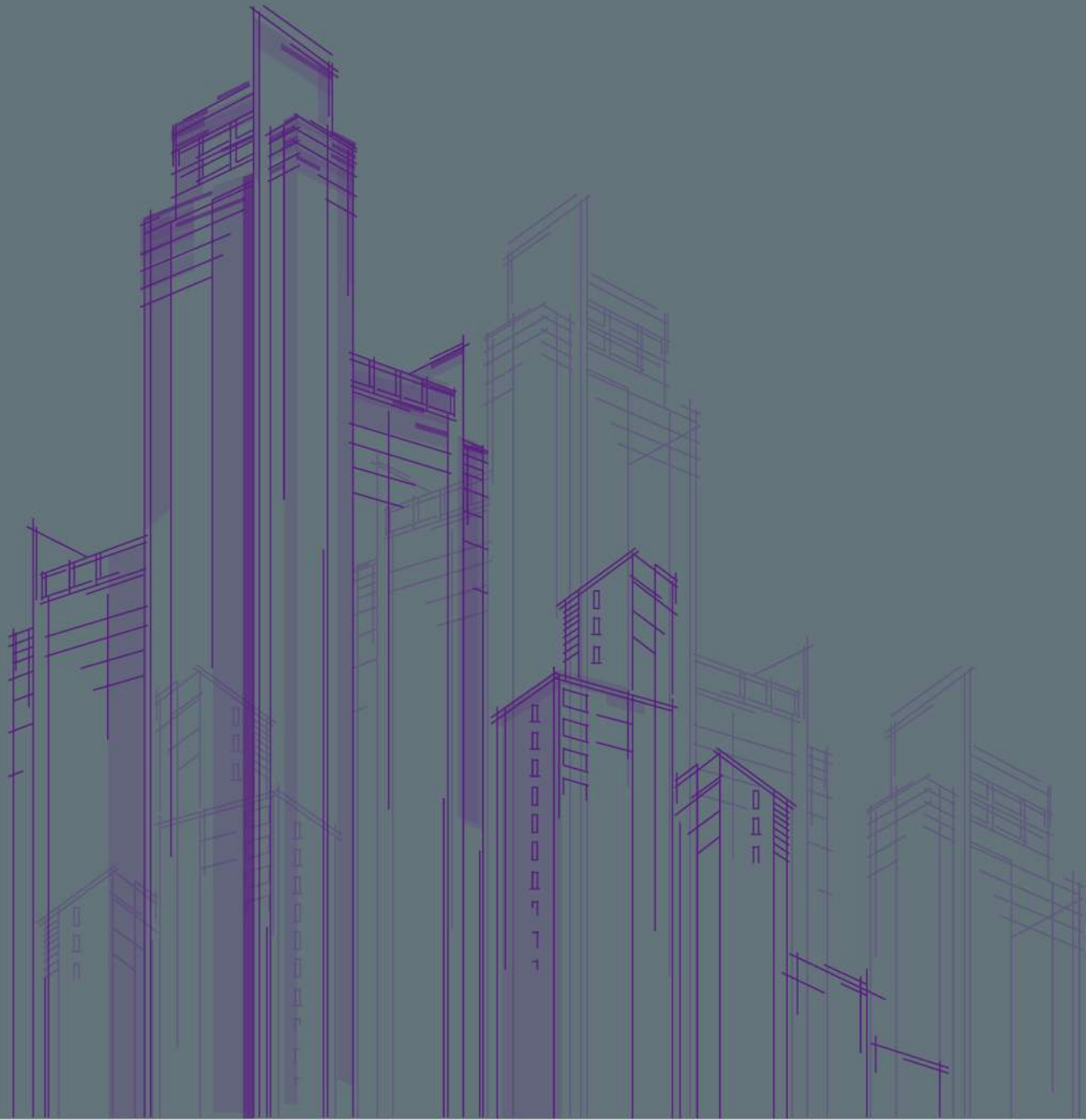
 SHANDONG FUJIZY ELEVATOR CO., LTD.

ESCALATOR &
MOVING WALK



SHANDONG FUJIZY ELEVATOR CO., LTD

Feel special in seconds



A leading elevator brand in northern China
for five consecutive years

Based on security,
rigorous design



The safety protection function design of FUJIZY escalators/sidewalks follows the latest GB 16899 standard and international standards, while fully considering passenger needs in details, bringing people a harmonious and safe riding environment.



Emergency braking technology

The emergency braking device and stop button can quickly stop the elevator in case of a malfunction, ensuring the safety of passengers.



Multi step (pedal) protection device

The multiple step (pedal) protection device that meets safety standards will immediately cut off the power supply of the main engine in case of a malfunction, fully ensuring the safety of passengers.



Comprehensive security protection

More than 30 safety protection devices and functional designs safeguard passenger safety in every detail.



Fault display settings

Accurately display the fault location and clearly communicate it to maintenance personnel to improve maintenance efficiency.



Visual component design

Visual components such as climbing lighting, apron lighting, yellow comb, and running direction indicator lights are designed to effectively alert passengers and guide them to safely board the elevator.

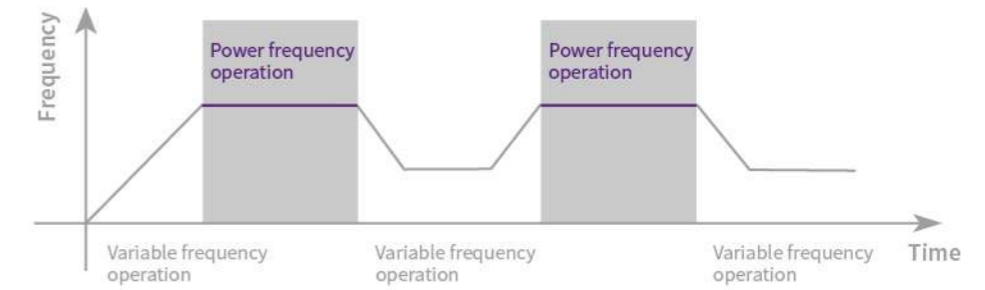
Save and create energy to create infinite value

Escalators and sidewalks are generally used in commercial and public transportation projects with high passenger flow and frequent use. Whether the products are energy-saving is particularly important. FUJIZY Control applies various advanced energy-saving technologies to escalators and sidewalks, effectively saving energy, reducing carbon emissions in public buildings, and helping buildings meet environmental standards.



VFD Tech and ECO energy-saving system

Dual pronged approach, intelligent switching of driving modes, energy saving up to 40%, while reducing operating noise and minimizing equipment wear and tear.



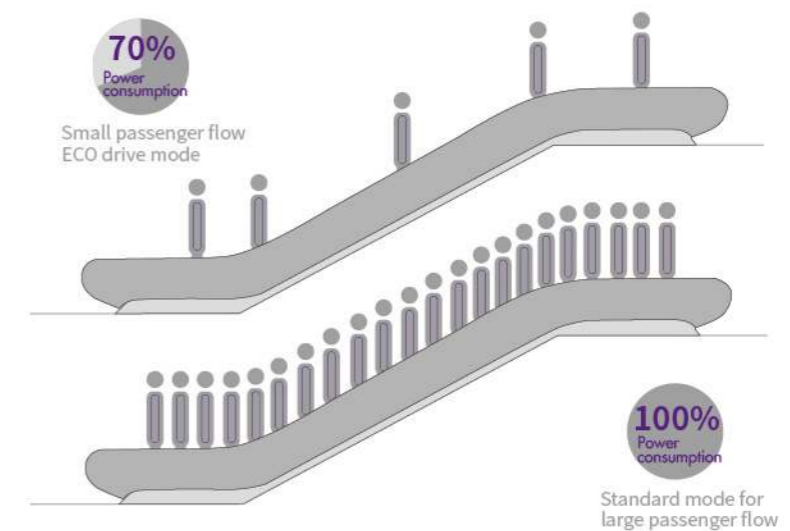
Energy feedback device

Renewable energy can be converted into electrical energy and fed back to the local power grid for use by nearby elevator equipment, achieving the goal of complete energy conservation.



LED lighting system

Adopting more energy-efficient LED lighting solutions further reduces energy consumption and is more durable.



FUJIZY escalator

Integrating modern aesthetics and leading technology, with superior quality and elegant beauty, it is the best choice for large pedestrian venues such as stations, shopping malls, and airports.



Strive for excellence, showcase superiority

Advanced microcomputer control system and driving device, precise control, smooth driving

Electric lubrication technology automatically lubricates transmission components, extending product service life

Simulate a neural safety platform to quickly perceive the health status of every part of the elevator

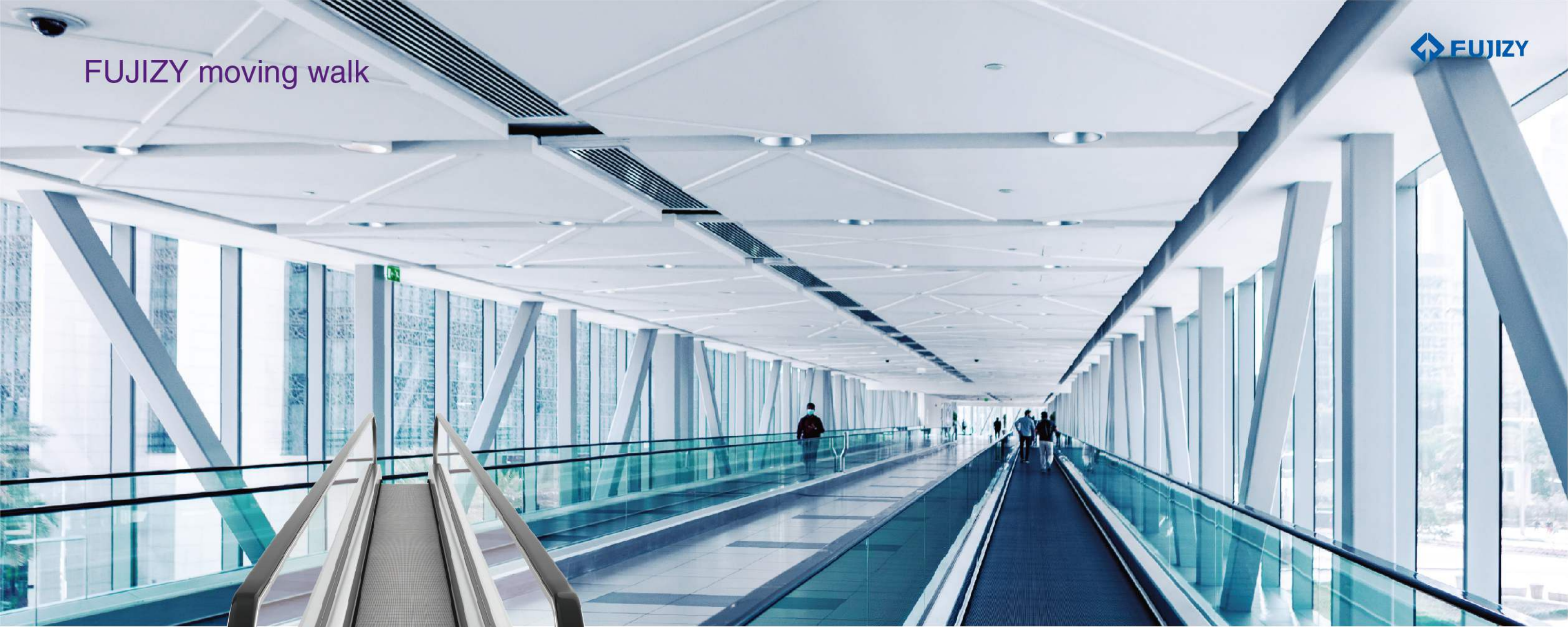
The roller has built-in steps, making the operation smoother and quieter

Unique angle steel structure design process endows the product with super strong bearing capacity

Diversified armrests and wall panels to meet the needs of different occasions

FUJIZY Imperial's innovative exterior design blends harmoniously with the environment





Using advanced technology concepts, safety first, superior performance, suitable for public places such as airports, shopping centers, and tourist attractions.

Perfect details, safe and stable

- Fish belly short pedal design, compact structure, suitable for various building layouts
- Short pedal surface anti slip groove design, small comb teeth inclined angle, convenient for easy entry and exit of shopping cart
- Fashionable exterior design adds scenery to various modern commercial and public buildings
- Advanced microcomputer control system comprehensively monitors the operation status of automatic pedestrian walkways and promptly eliminates hidden dangers
- Design process of angle steel structure, super strong load capacity, extending the service life of the entire elevator

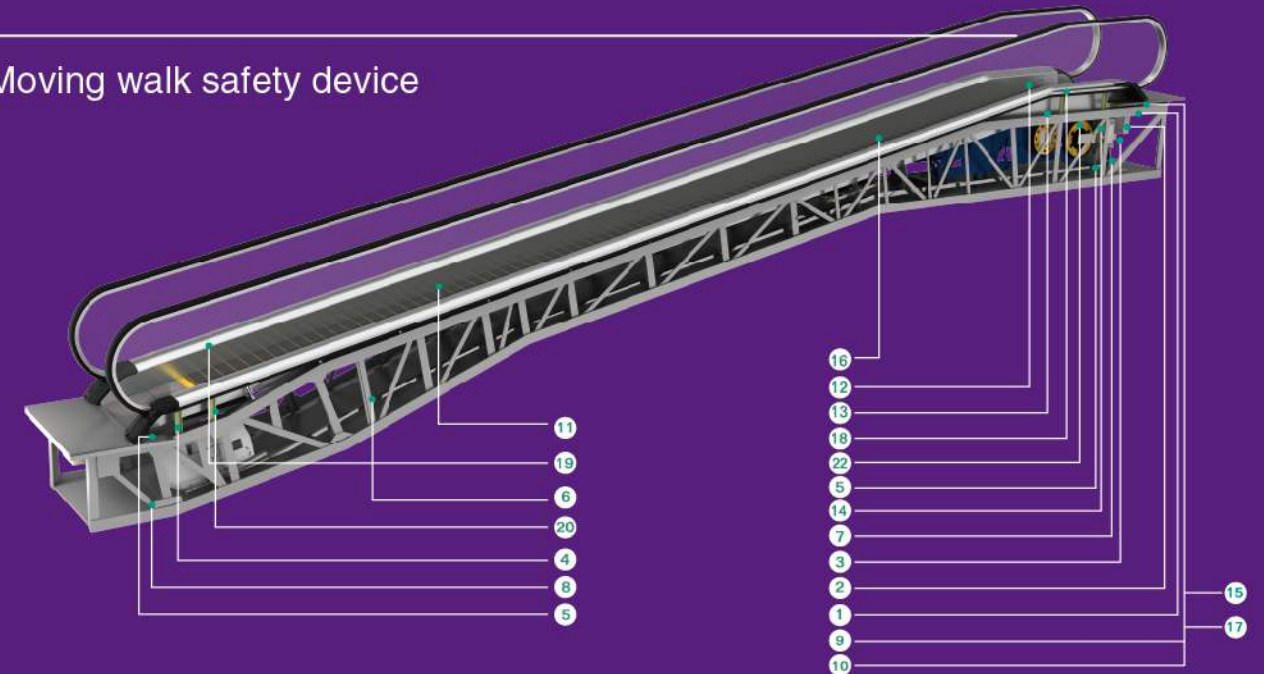
Safety device

Standard Safety Device	1. Lack of phase, error phase protection	If lack of phase or error phase has been checked out, the escalator (auto-walk) will automatically stop the operation.
	2. Motor over-load protection	When the current exceeds 15% of the current rating, the escalator will automatically stop the operation.
	3. Electrical appliance loop protection	It offers the automatic circuit disconnecting device to protect the circuit and mains components of the escalator (auto-walk).
	4. Handrail inlet protection	When some foreign substance has been clipped in the handrail inlet, the escalator (auto-walk) will automatically stop the operation.
	5. Comb plate safety device	When some foreign substance has been clipped in or between the combs, the escalator (auto-walk) will automatically stop the operation.
	6. Step sagging protection device	When there is abnormal step bending, the escalator (auto-walk) will stop the operation before the step entering into the comb plate.
	7. Broken drive-chain safety device	When the drive-chain has been over-stretched or it is broken, the escalator (auto-walk) will automatically stop the operation.
	8. Broken step chain protection	When the step (pallet) chain has been over-stretched or it is broken, the escalator (auto-walk) will automatically stop the operation.
	9. Over-speed protection	When there is over-speed to the escalator (auto-walk), it will automatically stop the operation.
	10. Direction reversal protection	When it comes the unintentional reversal of the direction of travel, the escalator (auto-walk) will automatically stop the operation.
	11. Security line	The yellow synthetic resin security line is located in the front position and two sides of the escalator tread so that the passengers will not tread in-between the edge of the adjacent step and the lift group lengthened skirt panel. The security line on both sides of the step is higher than the tread surface.
	12. Emergency stop button	When the button has been pressed down, the escalator (auto-walk) will stop the operation.
	13. Skirt panel protection	When some foreign substance has been clipped in between the skirt panel and the step, the escalator (auto-walk) will automatically stop the operation.
	14. Brake protection	When the electric force falls short of supply or it acts any of the safety device, the brake function goes into effect by the safety device through the spring resilience action. In this way, the escalator (auto-walk) stops the operation.
	15. Safety inspection switch	It is a safety device to prevent from the escalator starting during the inspection and maintenance.
	16. Step illumination	Illumination exists in the upper and lower ends of the escalator, in the lower part of the step in order to remind the passengers of the security matters.
	17. Alarm bell starting device	The alarm bell rings when it starts the escalator in order to remind the passengers of the security matters.
	18. Control device for handrail breakage	When the handrail is broken, the escalator (auto-walk) will automatically stop the operation.
	19. Skirt panel brush	Optional safety device installs brush between step and skirting so that the passengers' shoes will not touch the skirting.
	20. Handrail speed monitor	When the handrail speed versus step is slower than certain percentage, the escalator (auto-walk) will stop the operation.
Optional Safety Device	21. Drain function of lower machine room	When water inlet of lower machine room exceeds the standard, drain system runs automatically (for outdoor elevator type).
	22. Emergency brake	It prevents from the escalator slide and ensures the human security in case of the drive chain breakage or the out-of-order of the brake. (It should be allocated with the emergency brake when 6m<H.)

Escalator safety device



Moving walk safety device



Function



1. Armrest entrance (Standard)

The innovative and stylish streamlined handrail with entrance and exit design endows the escalator with greater spirituality and affinity.

2. Malfunctioning display (Standard)

By observing the digital indicators installed on both sides of the apron boards at the entrance and exit of the escalator (sidewalk), maintenance work can be made faster and easier.

3. The roller has built-in steps (Standard)

The roller is built into a specially designed roller step chain, which can effectively reduce the noise during driving operation, making the operation smoother and calmer.

4. Ladder lighting (Standard)

Green fluorescence is gently emitted from the meshing teeth of the adjacent two sections of steps (pedals) at the upper/lower ends to remind passengers to pay attention to the horizontal section of the steps and improve elevator safety.

5. Vertical traction machine (Standard)

Higher transmission efficiency, lower operating noise, and longer service life.

Handrail Color



Optional and diversified handrail colors.

6. Electric lubrication (Standard)

Controlled by a microcomputer, a refueling signal is sent out within a set time, automatically connecting the hydraulic pump for refueling and lubrication.

7. Direction of operation indication (Optional)

The direction of operation and prohibition display signs are placed at the entrance and exit of the handrail to provide obvious indications of operation or prohibition, ensuring that passengers can ride safely and freely.

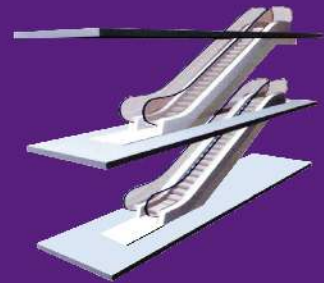
8. Apron lighting (Optional)

The apron board lighting arranged along the curved running trajectory of the steps (pedals) can make passengers feel comfortable and safe.

9. Heating device (Optional)

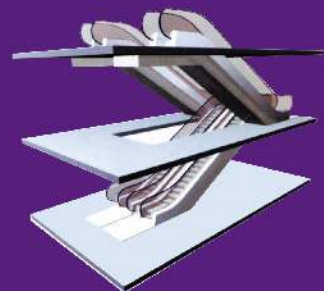
The upper part is installed next to the main unit in the upper computer room, mainly heating the upper computer room. The middle part is installed in the middle of the escalator, and the lower part is installed in the lower computer room, mainly heating the entire elevator path.

Rational arrangements



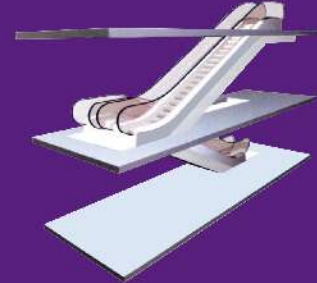
Single arrangement

This layout method takes up a small area and allows for flexible placement of escalators. It can only achieve one-way intermittent flow of passenger flow and is mostly suitable for small shopping malls and stores.



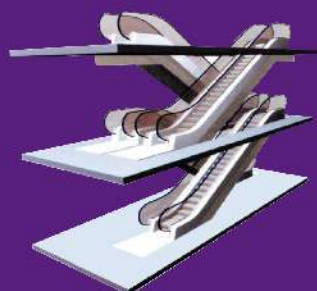
Parallel continuous arrangement

This layout is mainly suitable for large shopping malls and public transportation places with high passenger flow. It can achieve bidirectional continuous flow of large passenger flow; When there is a unilateral peak in passenger flow, the running direction of some escalators can be adjusted according to the needs of passenger flow to meet the peak flow. Because there is no need for an inner baffle, this method has a certain degree of economy.



Continuous arrangement

This layout method requires more space than intermittent layout, and it can achieve one-way continuous flow of passenger flow, which is more suitable for small and medium-sized department stores.



Cross arrangement

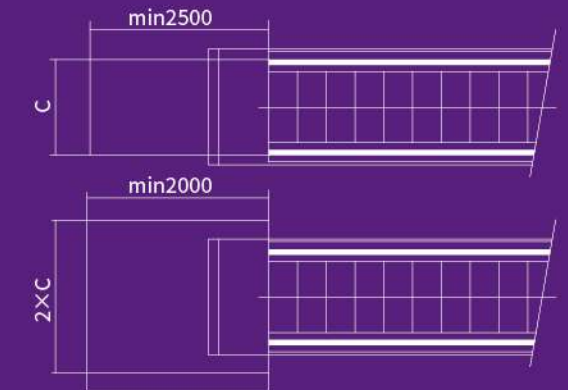
This layout is mainly suitable for large department stores and public buildings, where the frequency of transportation between floors should be kept as low as possible.

Installation notice

In addition to ensuring the dimensions and requirements of the contracted civil engineering, The following requirements should also be met.

In order to ensure the safe use of escalators and sidewalks, sufficient free space must be provided at each floor station. (See the minimum size diagram on the right)

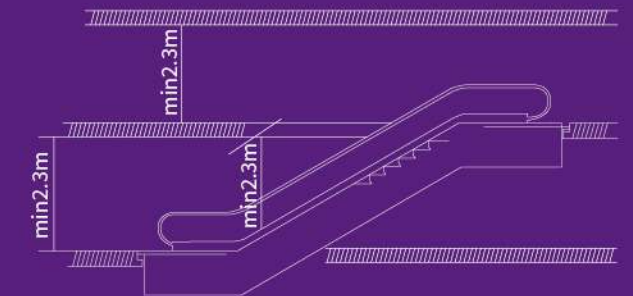
C=Add 80mm on each side of the outer edge of the handrail.



Headspace safety distance

At any point on the steps/pedals, there should be a safe distance of at least 2.3 meters without any obstacles.

Pay special attention! If the lifting height of another escalator on one escalator is less than 3.3 meters, it is impossible to achieve a safety distance of 2.3 meters for the overhead space.



The installation of escalators (sidewalks) must ensure the necessary horizontal safety distance

The horizontal safety distance from the outer edge of the handrail to the wall or other obstacles must be greater than 80mm.

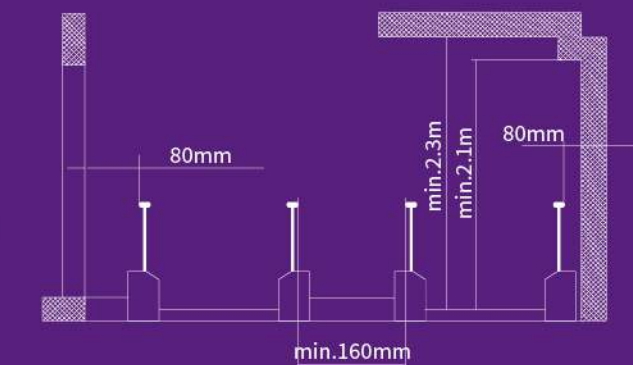
The vertical safety distance above the step/pedal area must be greater than 2.3m.

The height of the free space outside the handrail must be greater than 2.1m.

The horizontal safety distance from the outer edge of the handrail to the obstacle must be greater than 0.4m for floor openings or escalator/sidewalk intersections.

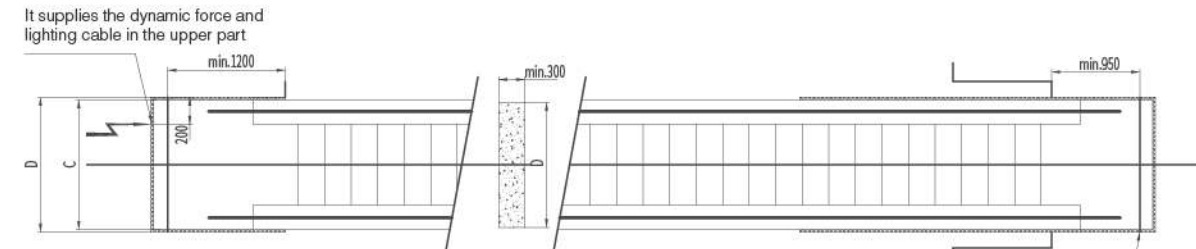
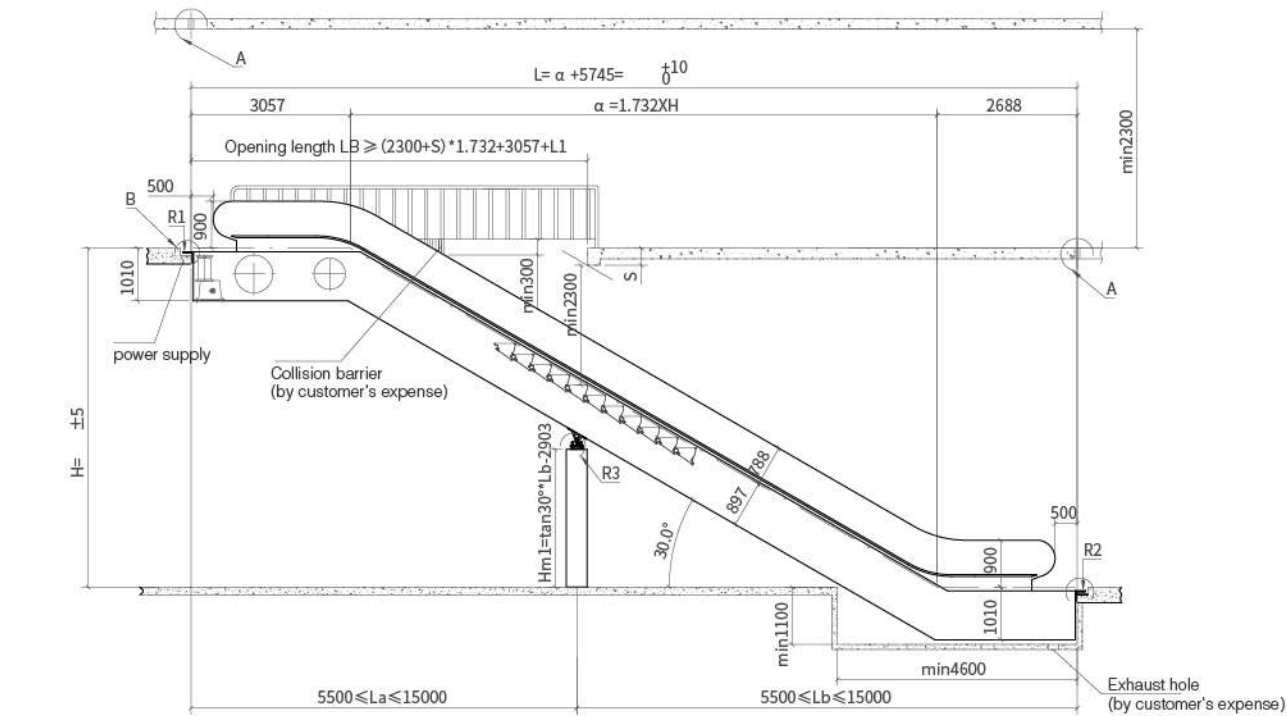
If the requirements are not met, specialized protective devices and collision barriers need to be installed.

Specialized protective devices and collision barriers can be consulted with Shandong Fuji Elevator Company.



Construction parameters

30° three-level escalator



It should fill or cover the gap between the machine and the construction. The user should take care of the standard which is applicable for the well width (by customer's expense)

Gap purpose silicon gel filling (by customer's expense) Sill final completion surface

The whole supporting face should be clean, bright and smooth.

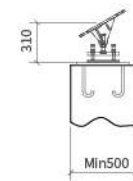
Pre-embedded steel plate 160x20xD (by customer's expense)

Model	H(mm)	L (mm)	KN	Supporting			(KW)
				R1 KN	R2 KN	R3 KN	
FJF-W-6000-1 -30°-600k 3600 people/h Speed 0.5m/s	6000	16537	81	53	46	82	8
	6500	17403	84	55	48	89	8
	7000	18269	87	57	50	95	11
	7500	19135	90	60	52	101	11
	8000	20001	94	61	54	109	11
	8500	20867	97	63	56	115	11
FJF-W-6000-1 -30°-800k 4800 people/h Speed 0.5m/s	9000	21733	100	66	59	122	11
	6000	16137	85	56	49	90	11
	6500	17003	88	58	51	97	11
	7000	17869	91	61	54	103	11
	7500	18735	94	63	56	110	15
	8000	19601	98	65	58	117	15
FJF-W-6000-1 -30°-1000k 6000 people/h Speed 0.5m/s	8500	20467	101	67	60	123	15
	9000	21333	104	70	63	130	15
	6000	16137	90	59	52	100	15
	6500	17003	93	62	55	107	15
	7000	17869	96	64	57	113	15
	7500	18735	99	67	60	120	15
	8000	19601	103	59	62	127	16
	8500	20467	106	72	65	133	16
	9000	21333	109	74	67	140	22

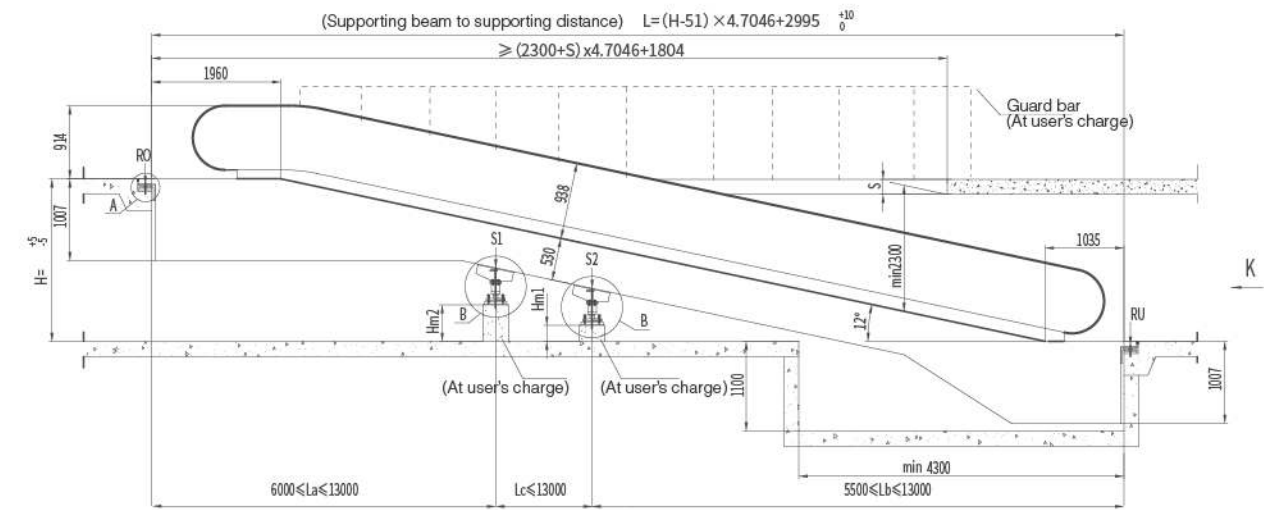
Size unit mm

Don't measure the size in the drawing.

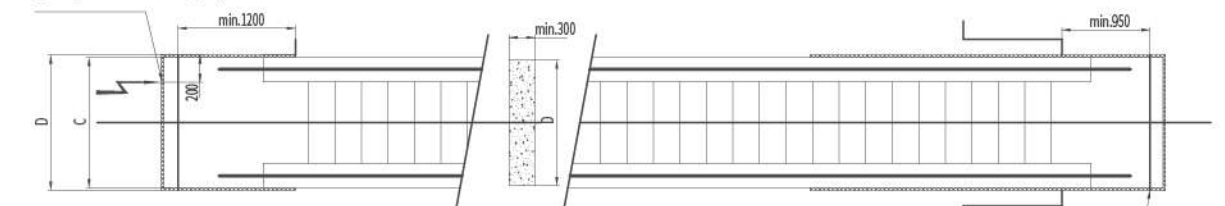
Tread width A	1000	800
Central distance of the handrail B	1238	1038
Outline width C	1530	1330
Supporting beam width in the well D	≥ 1560	≥ 1360



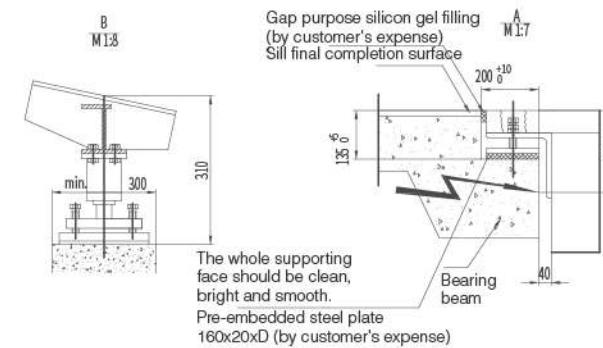
12° Moving Walk



It supplies the dynamic force and lighting cable in the upper part

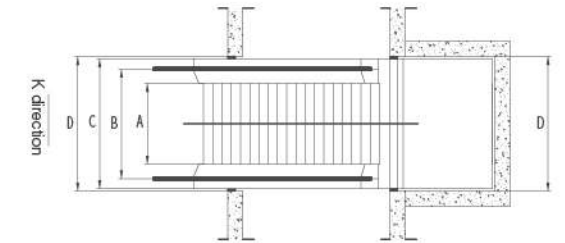


It should fill or cover the gap between the machine and the construction. The user should take care of the standard which is applicable for the well width (by customer's expense)



Gap purpose silicon gel filling (by customer's expense) Sill final completion surface

The whole supporting face should be clean, bright and smooth. Pre-embedded steel plate 160x20xD (by customer's expense)



The construction supporting force includes the vibration load.(KN)										
		No intermediate supporting			One intermediate supporting			Two intermediate supporting		
		$R_o = 0.0045XL + 13$			$R_o = 0.0045XL + 13$			$R_o = 0.0045XL + 13$		
		$R_u = 0.0045XL + 7$			$R_u = 0.0045XL + 7$			$R_u = 0.0045XL + 7$		
					$S1 = 0.00585X(La + Lb)$			$S1 = 0.00585X(La + Lc)$		
								$S2 = 0.00585X(Lb + Lc)$		
Traveling height	Intermediate supporting	From	To	S1	S2	La (mm)	Lb (mm)	Lc (mm)	Intermediate supporting height	
									Hm1	0.2126xLb-1054
1601	2177	-	-	-	-	-	-	-	Hm1	0.2126xLb-1054
2178	4151	1	-	L-7000	7000	-	-	-	Hm2	0.2126x(Lb+Lc)-1054
4152	5851	1	-	13000	L-13000	-	-	-	Hm2	0.2126x(Lb+Lc)-1054
5852	6000	1	1	13000	7000	L-22000	-	-	Hm2	0.2126x(Lb+Lc)-1054

Size unit mm

Don't measure the size in the drawing.

Tread width A	1000	800
Central distance of the handrail B	1238	1038
Outline width C	1530	1330
Supporting beam width in the well D	≥ 1560	≥ 1360

Professional maintenance, value-added services

From service outlets all over the country to professional service team building; From the complete spare parts center to the professional all-weather customer service center, FUJIZY has established a perfect service system to fundamentally protect the all-round interests of customers and users.

128

128 service outlets nationwide, to achieve nearby, timely maintenance

Adequate spare parts

Abundant spare parts, convenient delivery

24

The customer service center provides 24-hour consultation service and quick response

Certification Team

Certified installation team, efficient and standard installation process to ensure installation quality

Customized

The maintenance plan tailored to customer needs is scientific and reasonable

IoT

Real-time remote monitoring based on the Internet of Things technology, rapid diagnosis, maintenance personnel fast door

Service hotline

400-6996-777